

About Niigata City

- Population: Approx. 810,000
- Area: 726.45 km²
- Land use: 48% farm land
- Food self-sufficiency rate: 63%



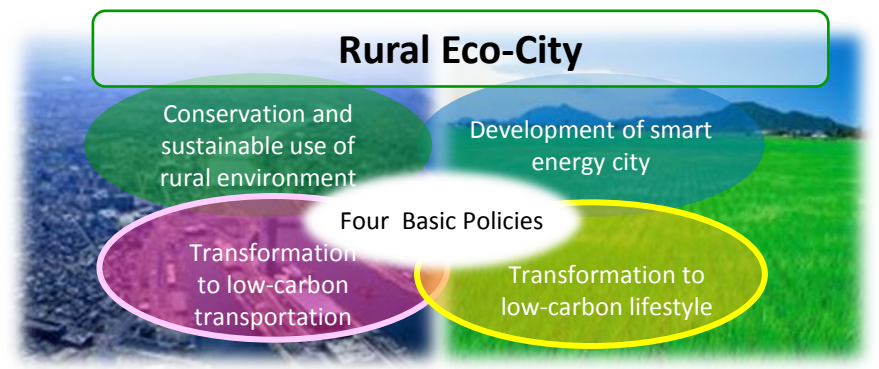
↑Kurosoke Chamame beans
Koshihikari rice, grown in Niigata



↑Bandai Bridge and tulips

Niigata Eco-Model City Action Plan

Circulate abundant value between urban and rural areas, with the aim of creating a Rural Eco-City, a city that can achieve harmonious growth.



Towards a Healthier, Longer Life – Smart Wellness City Initiative

Building a community where living here is enough to make you want to walk and keep walking

The ability to lead a healthy, active life even in old age – that alone makes a contribution to society. The development of a Smart Wellness City, based on independent “walking,” will encourage a change in residents’ behavior, even among those who are not interested in health creation, thus promoting the revitalization of the region.

Give points for health- and environment-related activities to get the uninterested sector moving



Creating health through Niigata Mass Dance Exercise



Health creation

Niigata Future Points

Initiatives for healthier and longer lives

Community planning

Enhancement of public transport

Development of walking spaces

BRT (Next-generation bus system)
Facilitation of movement around city center



Installation of rising bollards, the first on a public road anywhere in Japan



- Smart Wellness City Special Zone (Designated Dec. 2011)
- Niigata City Ordinance for Public Transport and Planning a Community that is Easy to Move Around by Bicycle and Comfortable to Walk in (Enacted Jul. 2012)

Contact

Environment Policy Division, Environment Department; Public Health Centers and Health Promotion Division, Health and Hygiene Department, Niigata City (Attn: Kobayashi/Sano)
Tel: 025-226-1363 Fax: 025-230-0467 E-mail: kansei@city.niigata.lg.jp