

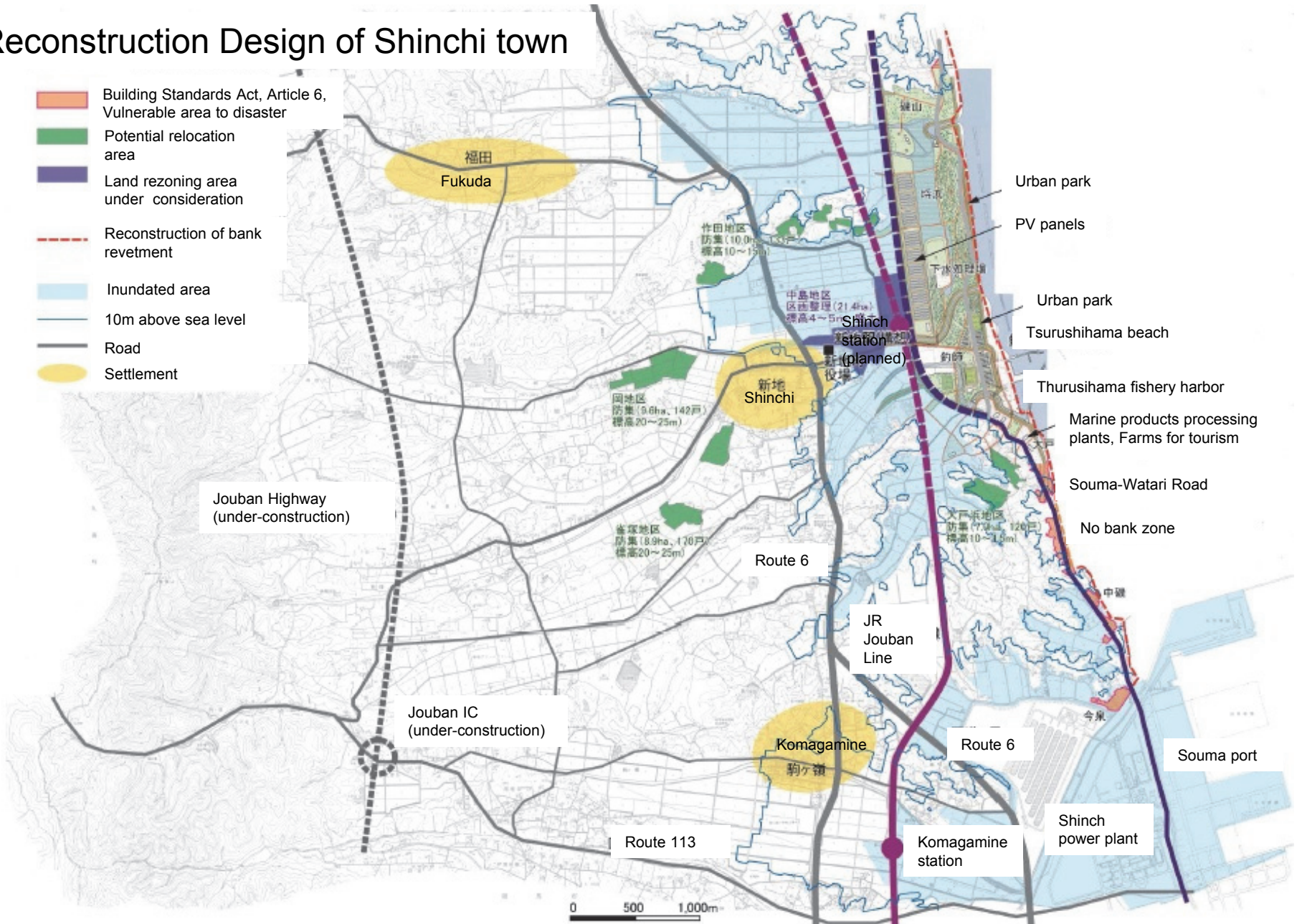
“Of course, Shinchichi is the best town”

-Town where you can see the future and hope of  
environment and life-

Shinchichi town, Fukushima prefecture

# Reconstruction Design of Shinchi town

- Building Standards Act, Article 6, Vulnerable area to disaster
- Potential relocation area
- Land rezoning area under consideration
- Reconstruction of bank revetment
- Inundated area
- 10m above sea level
- Road
- Settlement



0 500 1,000m

# Future visions of Shinchichi Town

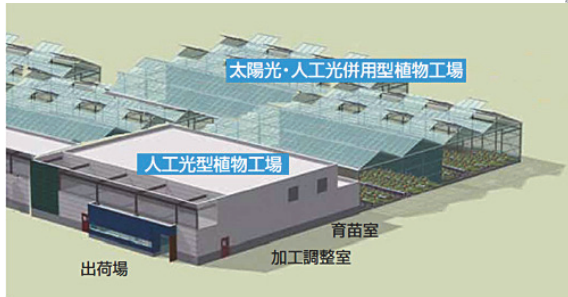
- **Open a new future through “power generation business”**
  - Our local power generation business that started from thermal power generation will develop and grow into a key industry that will create stable source of local employment as a hybrid power generation business that includes locally produced/locally consumed energy utilizing renewable energy.
  - Taking advantage of being able to use locally produced electric power cheaply, we will invite new industries and thereby expand local industry and employment opportunities.
  
- **A town of new connections supported by human network and ICT**
  - Establish a multilayered human infrastructure of self support, mutual support and public support.
  - Generate new local connections by way of maximizing the potential of human infrastructure through telecommunications infrastructure with which people can connect with anyone, anytime, anywhere.
  - Improve QOL of residents through community business that copes with diverse needs of residents by utilizing new social infrastructure.
  - Through collaboration between private business and community business based on new social infrastructure, materialize seamless and attentive service provision locally.
  
- **A town of safety and security with provision against unprecedented disasters**
  - Even with future possible disasters, secure safety of residents by system of locally produced/locally consumed energy from normal days as well as new social infrastructure and there by create a town where every single residents can live safely.



# Solar power generation facility (mega solar)

According to our plan, the size of the business is expected to be 5,000 kWh. This will cover approximately 2/3 of total households within the town. As for installation area of solar panels, assuming approximately 1 ha per 1,000 kWh, our plan is approximately 5 ha for 5000 kWh. Adding peripheral facilities to this, total area is expected to be approximately 10 ha.

Diffusion of Smart Grid (local supply of energy)



The idea of land use pattern in coastal area



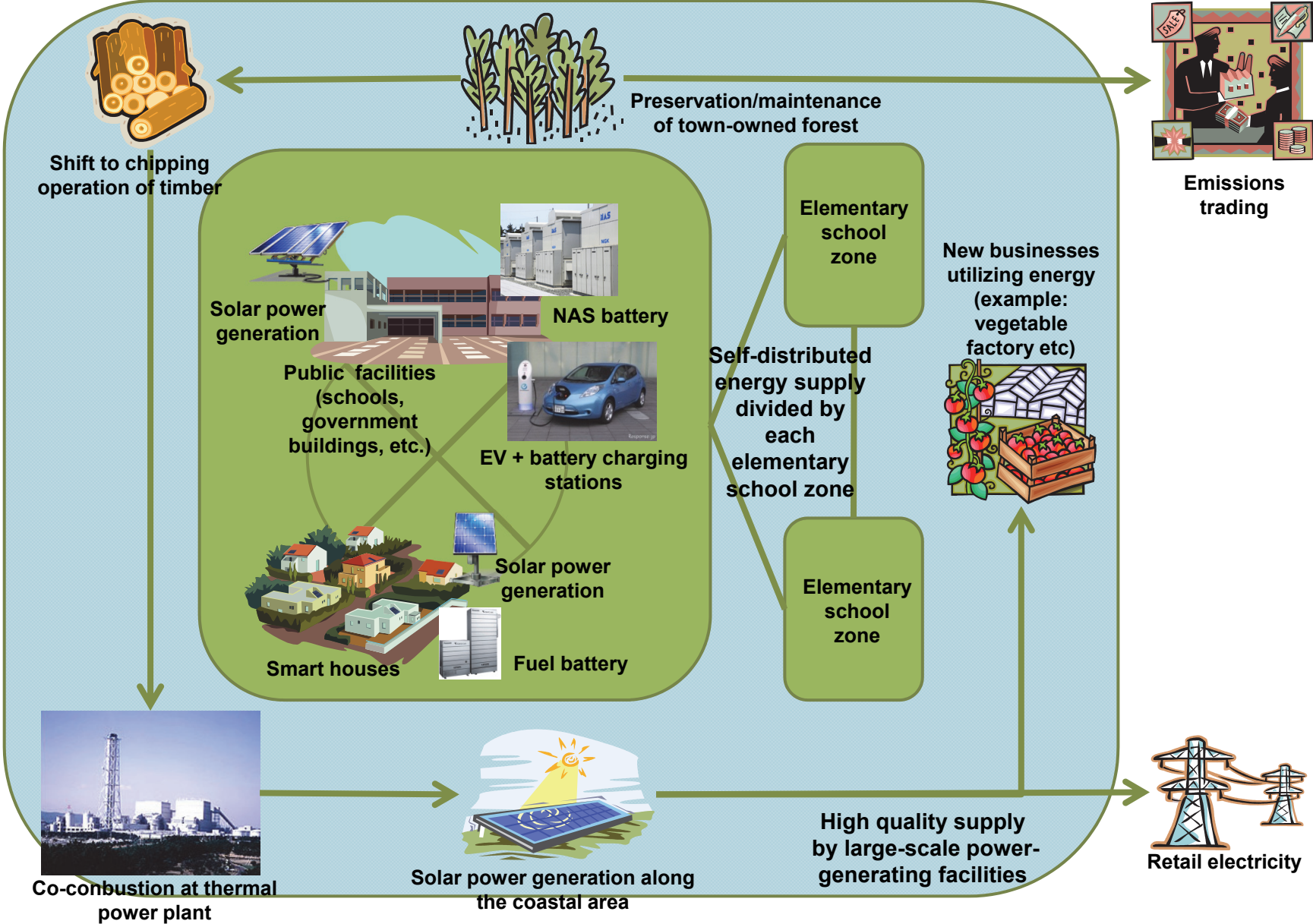


# Vegetable factory where usage of solar power generation is anticipated

“Agri Green”, tomato plant of Shinchi Town



# Future visions of Shinchichi Town (environment)





# Future visions of Shinchi Town (super aging society)

