

About Shimokawa Town

- Population: Approx. 3,400
- Area: 644.2 km²
- Land use: 91% forest, 5.5% agricultural land
- Main industries: Forestry, forest industry, agriculture

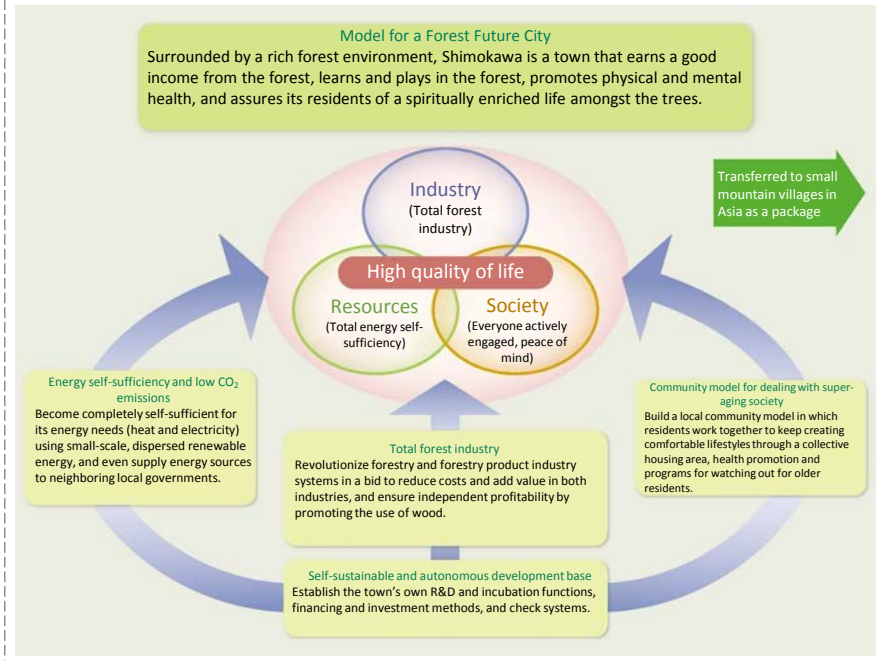
↓Ski jumping legend, Noriaki Kasai



↓Cosmetics made with essential oils made in Shimokawa

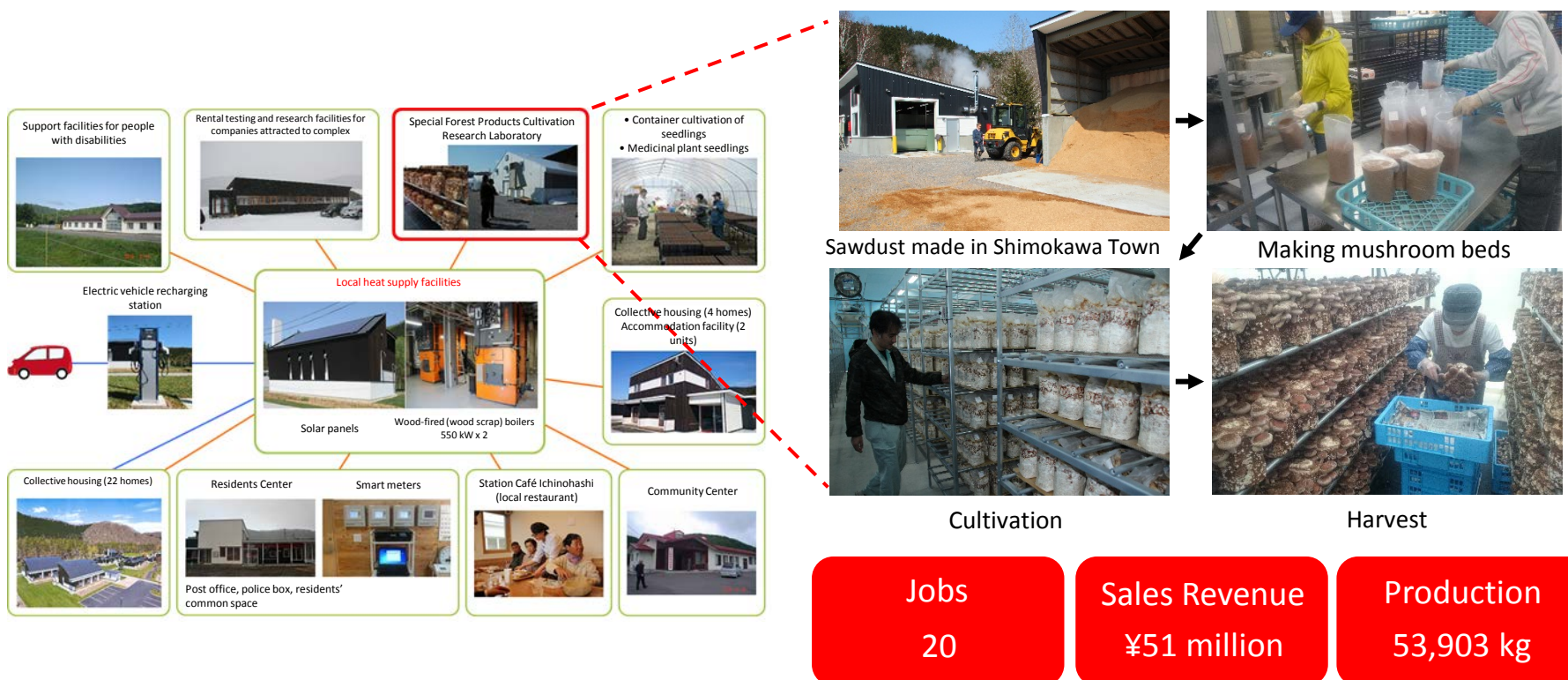


Model for a Forest Future City



Shimokawa Town Special Forest Products Cultivation Research Laboratory

- Background** Ichinohashi, a small village 12 km from Shimokawa Town, had a population of around 2,000 in 1960, but is now a marginal village with only about 130, mostly elderly, residents. That village of Ichinohashi is now the site of an energy self-sufficiency initiative mainly using wood biomass, a resource of the area.
- Objectives** To make use of wood biomass to cultivate special forest products, encourage local industries, and revitalize the local economy.
- Operations**
 - (1) Research and development into technologies for the cultivation and processing of special forest products
 - (2) Sales, distribution research, and opening of markets for special forest products



About Kashiwa City

- Population: 410,000
- Area: 114.74 km²
- Local specialty product: Turnips (largest production region in Japan)
- Main industries: Retail, foodservice



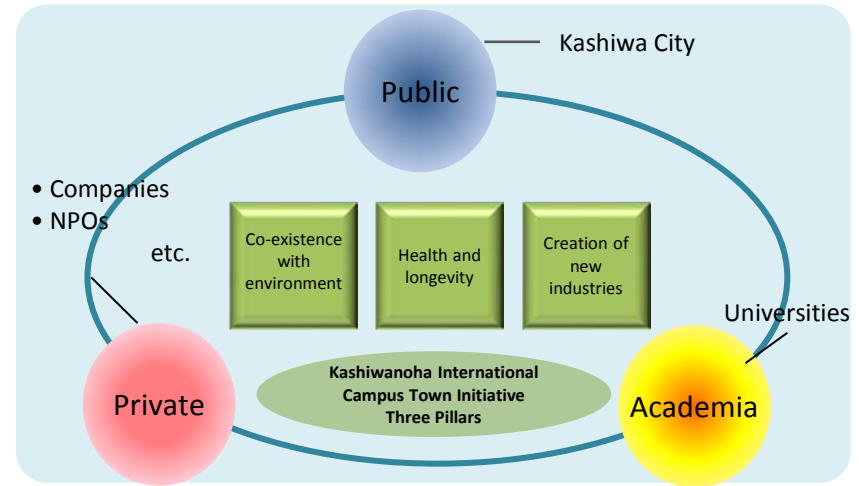
Commercial complex at Kashiwa Railway Station



Turnip, the local specialty product

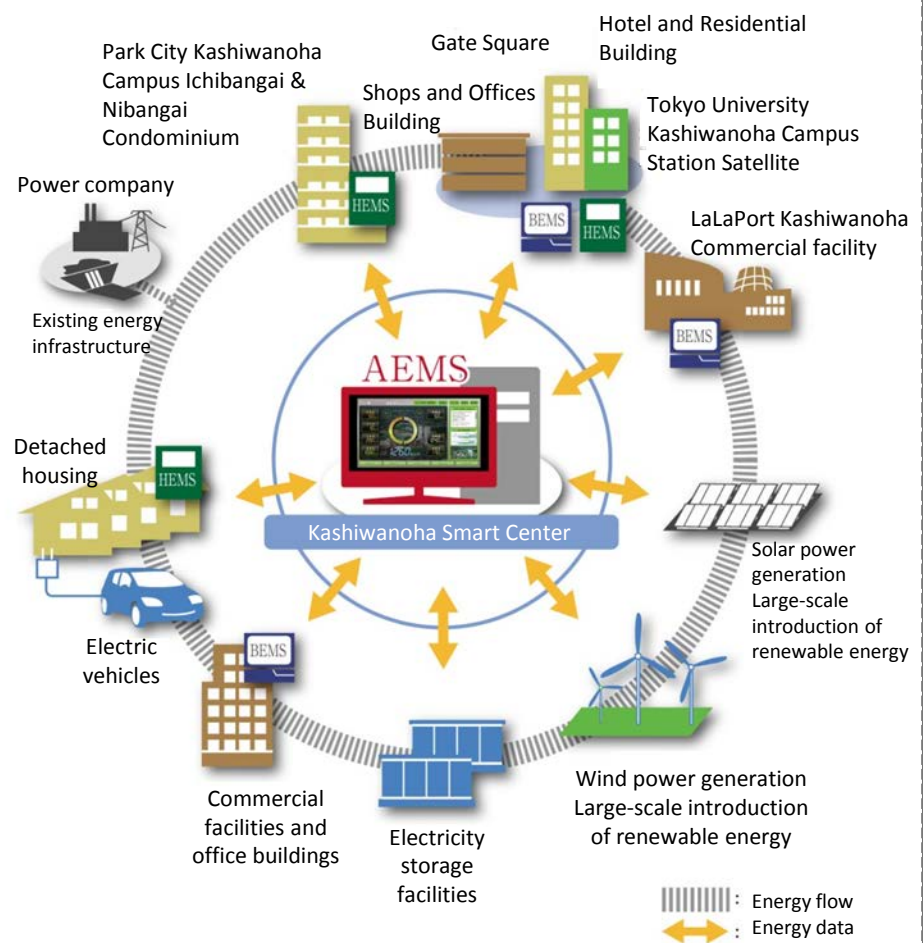
Kashiwanoha International Campus Town Initiative

The public, private and academic sectors are collaborating to build a sustainable community, centered on the Kashiwanoha district.



Area Energy Management System (AEMS/ Smart Center)

- A system for the optimization of total energy usage was introduced in July 2014 in the urban area around Kashiwanoha Campus Station of the Tsukuba Express.
- This system enables energy saving and low CO₂ emissions by peak shaving at normal times, while also offering safety and reassurance to the community by supplying electricity to infrastructure such as elevators in high-rise apartments and pumps for drawing up underground water during a disaster or power outage, through the combined use of large-scale storage batteries and gas power generators.



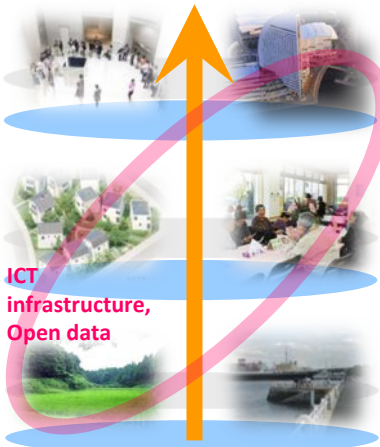
AEMS: Area Energy Management System
BEMS: Building Energy Management System
HEMS: Home Energy Management System

Contact

Planning and Coordination Division, Planning Department, Kashiwa City (Attn: Takagi)
Tel: 04-7167-1117 Fax: 04-7167-6644 e-mail: info-kkcc@city.kashiwa.lg.jp

About Yokohama City

- Population: Approx. 3.73 million
- Area: 435 km²
- Main industries: Service, real estate, wholesale and retail, manufacturing



- **Creation of arts and culture and growth industries**, Functional business spaces
- **Low-carbon** and sustainable energy, water and sewage works, and waste collection service networks
- Total coordination between **healthcare, nursing care, welfare and raising children**.
- Living spaces blessed with **natural environment (water and greenery)** and geographical features.

Roles of city government, residents, business, etc.

- In cooperation with various stakeholders to promote cross-cutting initiatives for solving urban issues



Collaboration with 18 wards and 14 bureaus to pursue initiatives across entire administration

Community Building to Suit Regional Characteristics

- Projects that leverage the characteristics of the coastal urban area and suburban areas

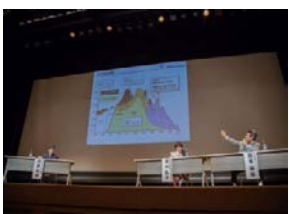
<Suburban Areas>

Diverse parties such as the local community, private business, city government and university are working in coordination to solve local issues such as supporting elderly people, raising children, and rehabilitation of residential areas, etc., and to create a sustainable and attractive town planning model.



Marché event (around Sotetsu Izumino Station)

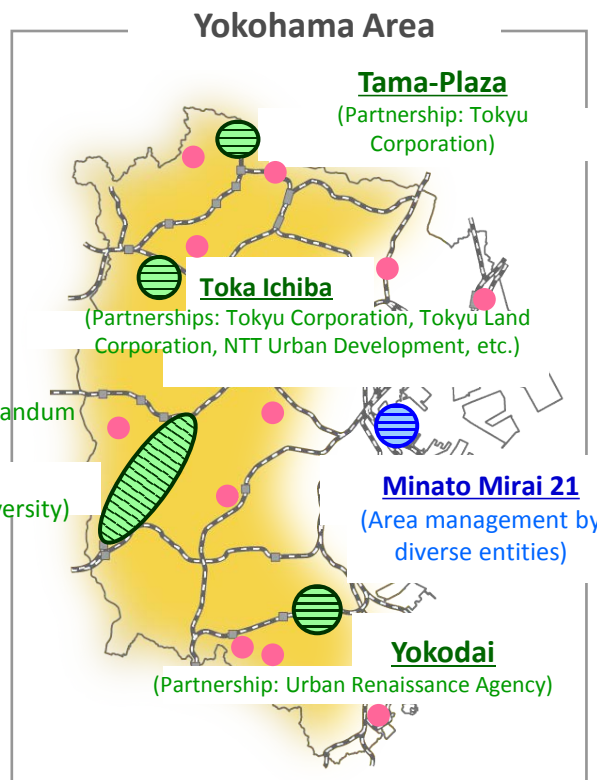
Areas along Sotetsu Izumino Line
(Partnerships/Memorandum : Sotetsu Holdings, Yokohama National University, Ferris University)



Next-Generation Suburban Development Forum (Tama-Plaza)



Community activities using shop facilities in housing complex (Yokodai)



* Projects that leverage the characteristics of each area are in progress in 11 other areas of the city

<Coastal Urban Area>

Advanced community building through public-private partnership is underway in the Minato Mirai 21 district under the Minato Mirai 2050 Project Action Plan, and is being communicated as an environmental showcase to both Japan and abroad.

<p>Energy</p> <p>Wind power generation</p>	<p>Greenery</p> <p>Grand Mall Park</p>
<p>Activity</p> <p>Smart Illumination Yokohama 2015 (DN Lighting Co., Ltd.)</p>	<p>Eco-Mobility</p> <p>Community Cycles</p>

- Delivering and developing city development know-how in Yokohama both at home and abroad

About Toyama City

- Population: Approx. 422,000
- Area: 1,241.77 km²
- Characteristics: The city has a rich natural environment with diverse geographical features, spanning 4,000 meters in elevation, from the 1,000 m deep Toyama Bay, known as a "treasure trove of seafood," to the Mt. Tateyama range that rises to almost 3,000 meters above sea level.



Mt. Tateyama Range



trout sushi



Firefly squid

Vision for the City

Current Status and Issues of Regional Cities

Shrinking and aging population, decline in inner city areas, harsh fiscal management, etc.

Proposing one future image for a regional city that can deal with these challenges

1. Compact city planning based on public transportation
2. Creating quality, attractive lifestyles for residents
3. Industrial development leveraging local characteristics



Create a sustainable city, and thus, realize a universally appealing, vibrant community

Development of LRT Network

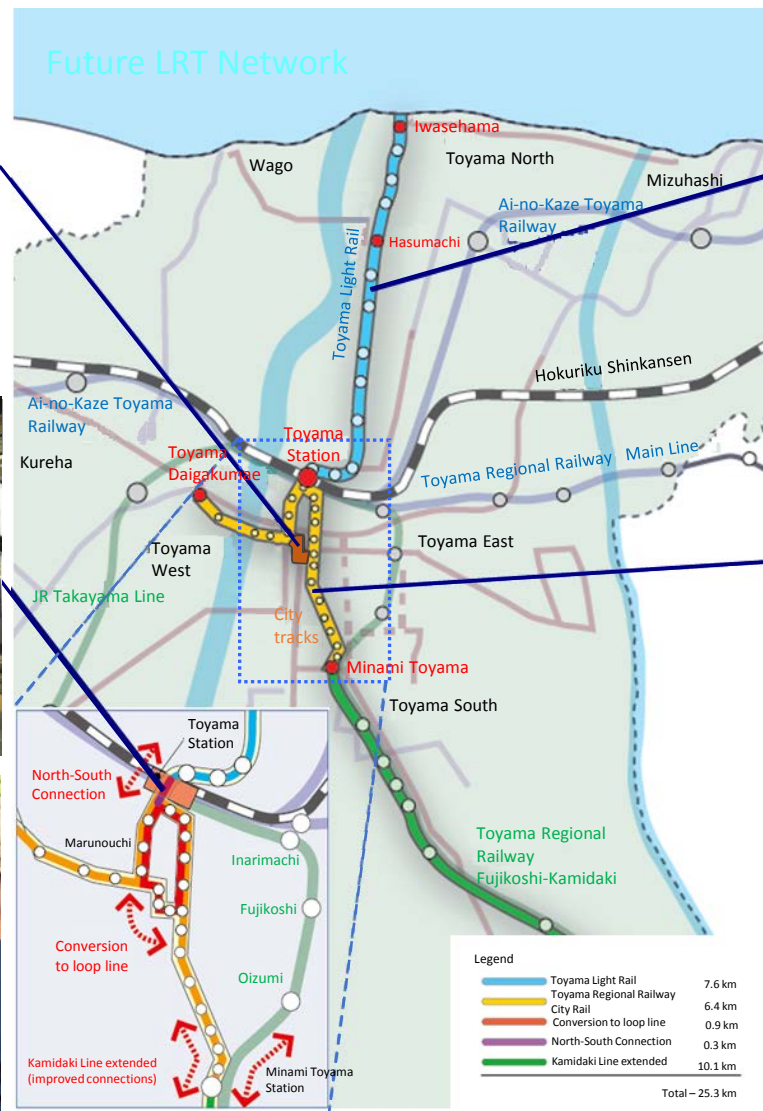
The **development of the LRT network** has led to a rethinking of a lifestyle that had become overly dependent on cars and pursued the building of a **walkable community**, thus, achieving a **sustainable city** that deals with the problems of the environment and population aging.



City Train loop Line (opened Dec 2009)



Services extended to below Shinkansen's elevated tracks (opened Mar 2015)



Toyama Light Rail (opened Apr 2006)



City train Line



Contact

FutureCity Promotion Section, Environmental Policy Division, Environmental Department, Toyama City (Attn: Sunuma)
Tel: 076-443-2053 Fax: 076-443-2122 E-mail: kankyousei-01@city.toyama.lg.jp

About City of Kitakyushu

- Population: Approx. 958,015
- Number of households: 427,597
- Area: 491.95 km²
(as of Jun.1,2016)



Kitakyushu – an attractive city in which to live



Gateway to Asia



Manufacturing



Rich nature



環境未来都市 北九州市

©ていけん北九州市

Kitakyushu Future City Vision

A bustling, secure, and vigorous city where people can shine

~ Utilizing the experience from dealing with pollution and the innovation of sustainable creation ~




1960年代
現在
Technology and experience in overcoming pollution

International environmental cooperation

Creation of recycling society

Community development towards the creation of a "World Capital of Sustainable Development"

Kitakyushu Regional Energy Base Project

Showroom for diversity of energy supply sources



Solar power station

風力発電適地



Offshore wind power station



Established in December 2015

Regional energy services company

Kitakyushu Power

Higher Efficiency Coal-fired Power Generation Technologies (EAGLE)



Held in April 2016

- G7 Kitakyushu Energy Ministerial Meeting Commemorative Events
- Local Government Offshore Wind Power Seminar and observation
 - National Local Government PPS Symposium

Hydrogen fuel cell demonstration home



FCV2H (fuel-cell vehicle supplying power to home)

Realization of "hydrogen society"



Regional energy management center



Omotenashi



Kitakyushu Energy Ministerial Meeting

G7 Kitakyushu Energy Ministerial Meeting

May 1-2, 2016

About the Kesen County

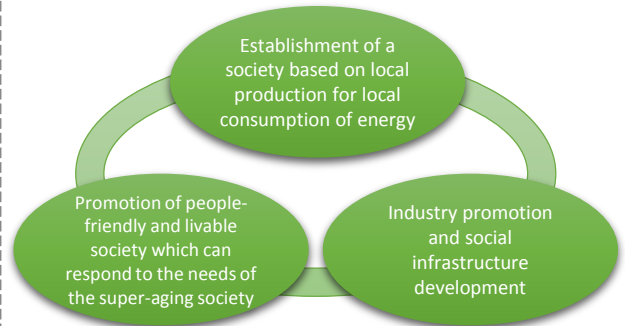
- Population: Approx. 64,000
- Area: Approx. 890 km²
- Features: Kesen County consists of three local governmental entities; coastal cities of Ofunato and Rikuzentakata, and forest rich town of Sumita. The three have always collaborated each other as a single county to sustain its society throughout the ages.



Left: Goishi Coast, Ofunato
Center top: Taneyamagahara, Sumita
Center bottom: Rokkando Cave, Sumita
TRight: Miracle Pine Tree, Rikuzentakata

The Kesen County's Vision

Kesen County Vision for the FutureCity



Building a Model for the Advanced Collaboration in Medical and Social Services

Kesen County FutureCity
Joint Coordination Committee for
Medical Services, Nursing Care,
Health and Social Welfare
(Established in August 2014)

First, the Joint Coordination Committee was established in order to discuss the possible improvements of coordination between medical and social services which were indispensable to respond the needs of the super-aging society. The members consisted of the stakeholders and experts from the various fields.

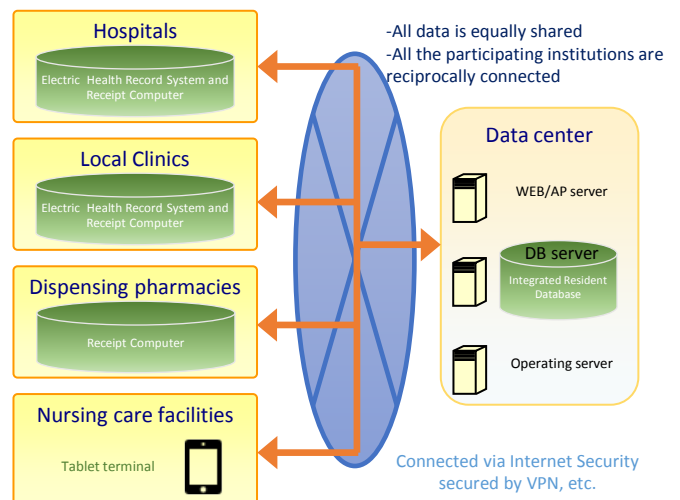
General Incorporated Association
Mirai Kanae Institution
(Established in April 2015)

The above JCC has been transformed to a general incorporated association 'Mirai Kanae Institution' ('Realize the future' in Japanese) in order to implement the outcomes of the discussions by strengthening its organizational capacity and improving its social trust.



Mirai Kanae Institution Project

- Introduction and Operation of a local information network system for medical and social services (called 'Mirai Kanae Net')
- Enhancement of nursing care services in the county
- Other projects related to the super-aging society



Conceptual diagram of Mirai Kanae Net, launched in April 2016

Contact

FutureCity Initiative Promotion Office, Policy Planning Department, Ofunato City Office (Attn: Niinuma/Sato)
Tel: 0192-27-3111 Fax:0192-26-4477 e-mail: kikaku@city.ofunato.iwate.jp

About Kamaishi City

- Population: Approx. 36,000
- Area: 440.34 km² • 89.2% Forest
- Main Industries: Machinery Manufacturing, Fishery



Marine Products
(Oysters)

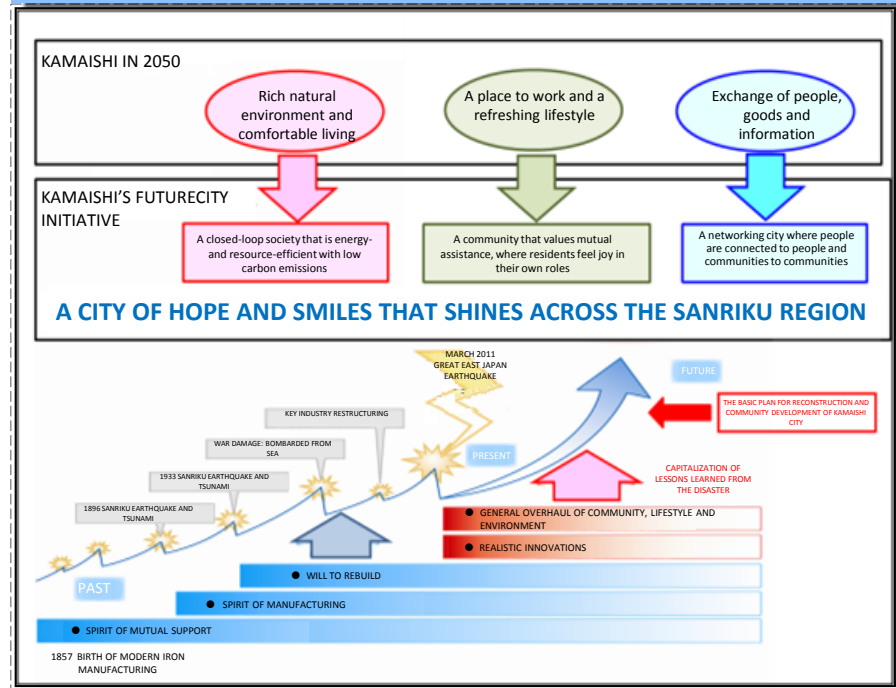


Hashino Blast Furnace Ruins,
Site of Japan's First Western-
style Blast Furnace
(World Heritage-listed)



MIFFY CAFÉ
KAMAISHI

Kamaishi's FutureCity Initiative



Kamaishi's Version of a Smart Community

In recognition of the vulnerability of the energy environment at times of disaster, Kamaishi's basic plan for reconstruction and community development sets out clearly "the promotion of creative energy solutions." Under this plan, a diverse range of energy resources are being utilized in the development of the community.

In April 2015, a public recovery housing complex was completed. This complex is equipped with facilities to ensure continuity of power supply even in emergencies, including solar hot water, solar power, and electric vehicle charging stations that can supply power to homes. In addition, Kamaishi is pursuing initiatives aimed at independent, safe and reliable energy, such as bringing together renewable energy industries and local energy management.

SOLAR POWER GENERATION SYSTEM FOR EMERGENCY POWER SUPPLY

SOLAR WATER HEATER SYSTEM SUPPLIES HOT WATER TO EACH HOUSE



LOW-COST ELECTRICITY PROCUREMENT THROUGH BATCH POWER RECEPTION

ELECTRIC VEHICLE CHARGING STATION THAT CAN SUPPLY POWER TO HOMES INSTALLED IN ADJOINING LIVING SUPPORT CENTER

VISUALIZATION OF ENERGY USAGE



KAMINAKASHIMA RECOVERY HOUSING (FROM APRIL 2015)

Contact

COMMERCE, INDUSTRY AND LABOR ADMINISTRATION DIVISION, INDUSTRY PROMOTION DEPARTMENT, KAMAISHI CITY OFFICE
(ATTN: FUJIMARU)
TEL: 0193-22-2111 FAX: 0193-22-2762 E-MAIL: FUJIMARU8232@CITY.KAMAISHI.IWATE.JP

About Iwanuma City

- Population: Approx. 44,300
- Area: 60.45 km²
- Tourist attractions: Takekoma Inari Shrine, Millennium Hope Hills

Takekoma Inari Shrine



One of Japan's three great Inari shrines

Revetments (Millennium Hope Hills)



Part of the rubble from the earthquake was recycled to build the hills. The photograph on the right is of an event to plant trees along the garden's perimeter.

Eco-compact City

Rebuilding a friendly and environmentally-conscious community that people want to keep living in



Tamuranishi Community Building - Taking Residents' Wishes Into the Future



The first collective disaster-prevention relocation in the region affected by the Great East Japan Earthquake, carried out at the initiative of the community residents.



Solar farm built on former agricultural land that could not be rehabilitated due to subsidence, etc. caused by the Great East Japan Earthquake. One of the largest in the earthquake-affected area.



Town declared open in July 2015



Tamuranishi, site of the collective relocation

Contact

Policy Planning Division, General Affairs Department, City of Iwanuma, Miyagi (Attn: Sugawara/Sugawara (Shin))
Tel: 0223-22-1111 (ext. 528) Fax: 0223-24-0897 Mail: seisaku-k@city.iwanuma.miyagi.jp

About Higashimatsushima City

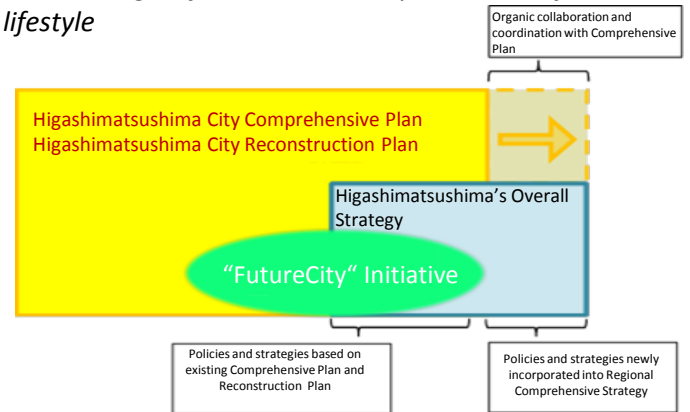
- Population: Approx. 40,200
- Area: 101.86 km²
- The region has flourishing seaweed and oyster farming and agricultural industries. The "smoke art" of the Blue Impulse JASDF aerobatic jet team is a captivating attraction.



Higashimatsushima's Overall Strategy

Higashimatsushima "Smile" Strategy

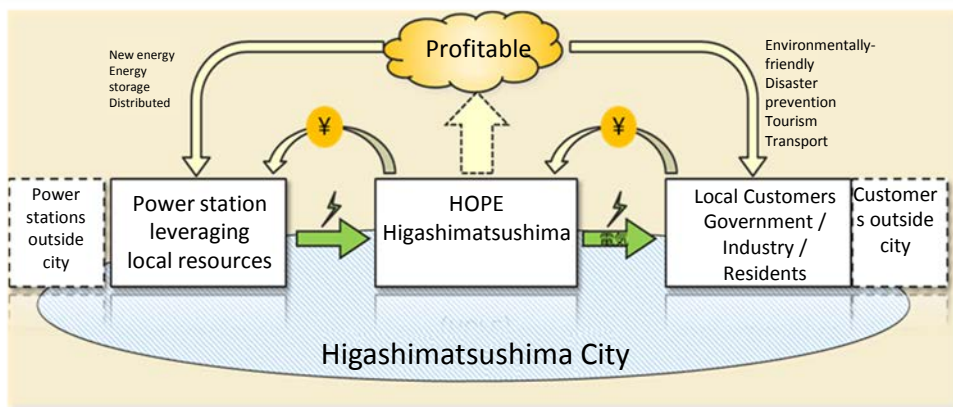
1. Create a flow of new people to Higashimatsushima
2. Create jobs in the region
3. Fulfill the young generation's hopes for marriage, childbirth and child rearing
4. Create a region for the times and preserve a safe, reassuring lifestyle



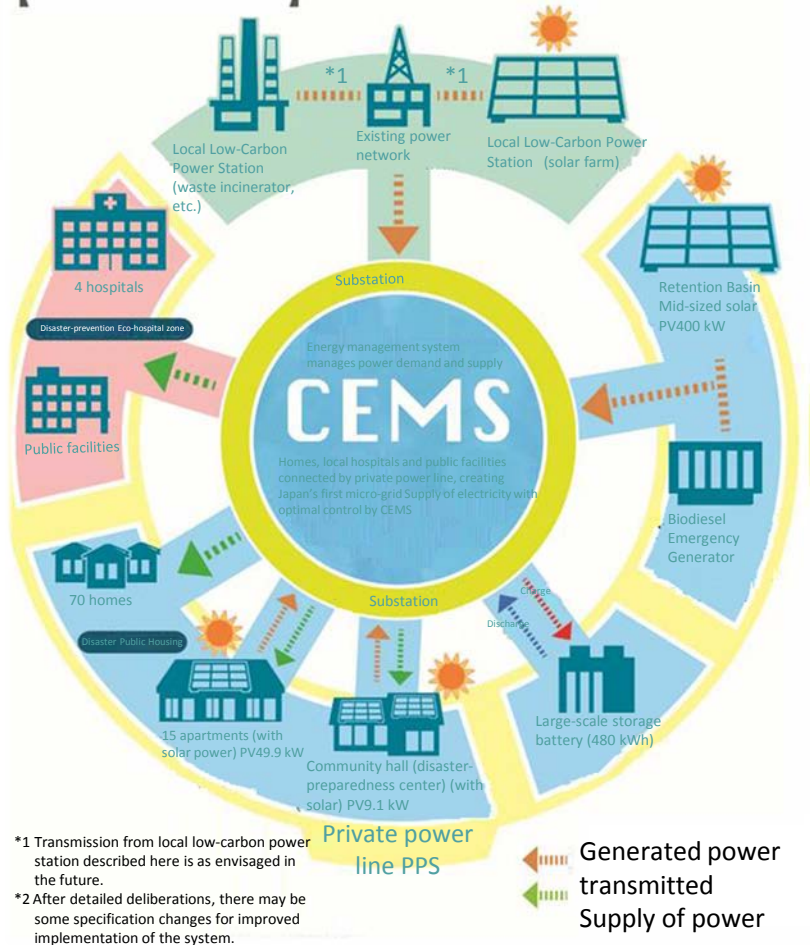
Higashimatsushima Smart Disaster Prevention Eco-town the first in Japan to be based on local production/local consumption

Autonomy of Higashimatsushima City Disaster Public Housing and Realization of Distributed Low-Carbon Energy

April 1, 2016: Higashimatsushima New Power Supply Launched!!



System Overview



Public disaster housing complex powered by Japan's first micro-grid

Contact

Future City Project Office, Reconstruction Policy Division, Reconstruction Department, Higashimatsushima City, Miyagi Prefecture
Tel: 0225-82-1111 Fax: 0225-82-8143 E-mail: fukko@city.higashimatsushima.miyagi.jp

About Minamisoma City

- Population: Approx. 63,200
- Area: 398.50 km²

Soma Nomaoi (Samurai Festival)
A magnificent re-enactment of a battle scene from the Warring States Period.

The Kashima Lone Pine, the region's symbol of hope

Shimiten, a fried rice cake confectionery that blends Japanese and Western cuisine.



Minamisoma's Vision for Promotion of Renewable Energies

Promote creation of local closed-loop mechanisms through the local production and local consumption of renewable energies.

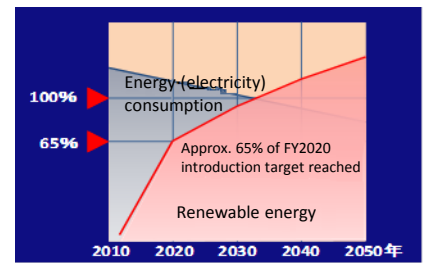
Basic Policies of Vision

- A town not dependent on nuclear power
- A town that can withstand disasters
- Contribution to the regional environment

- (1) Promotion of energy conservation
- (2) Proactive use of renewable energies
- (3) Establishment of Minamisoma's version of a smart community

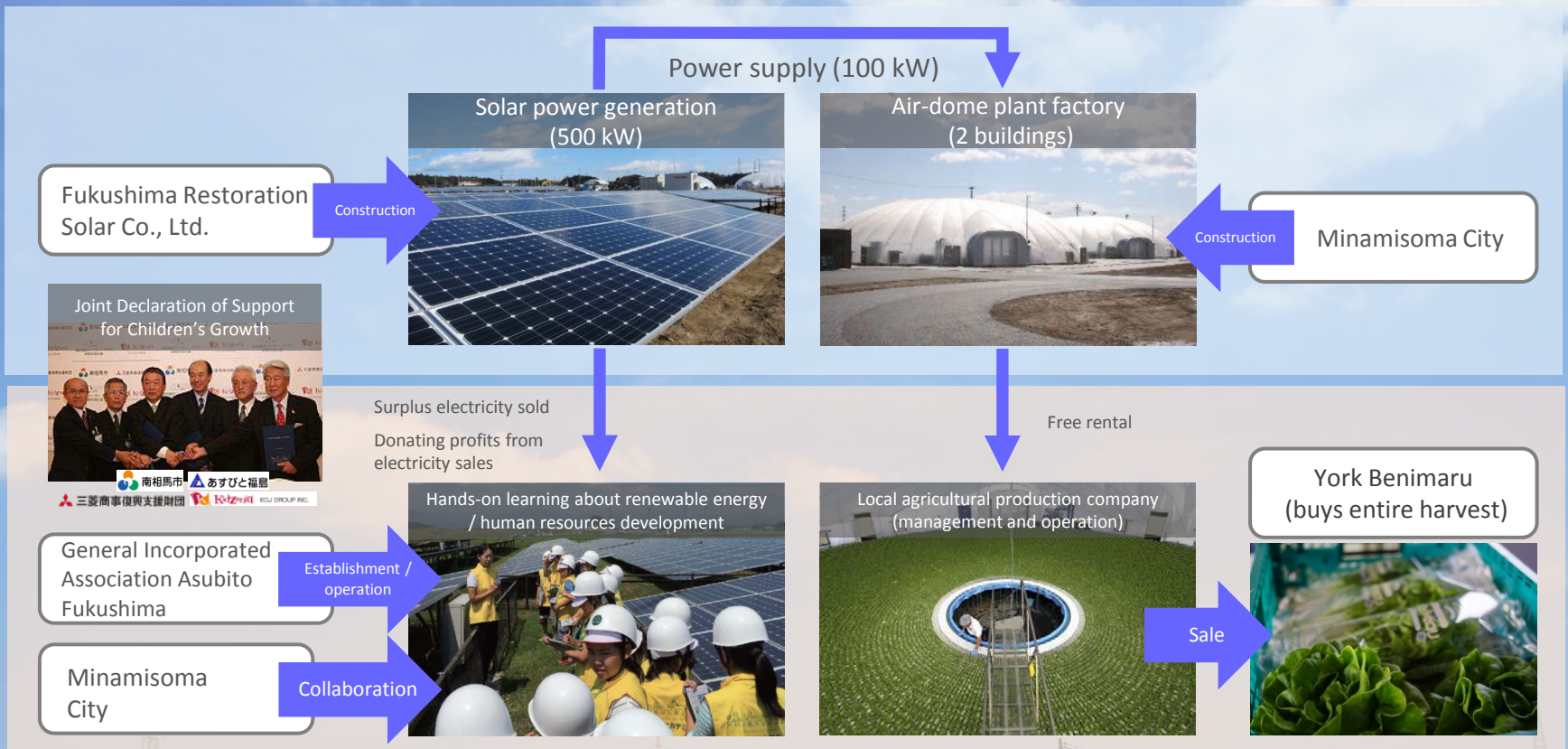
Creating mechanisms for local energy closed loop

Renewable Energy Introduction Targets



Minamisoma Solar Agripark Project

Public-private partnership project developed as a local closed loop model project, through a combination of solar power generation, plant factories, and hands-on learning.



Contact

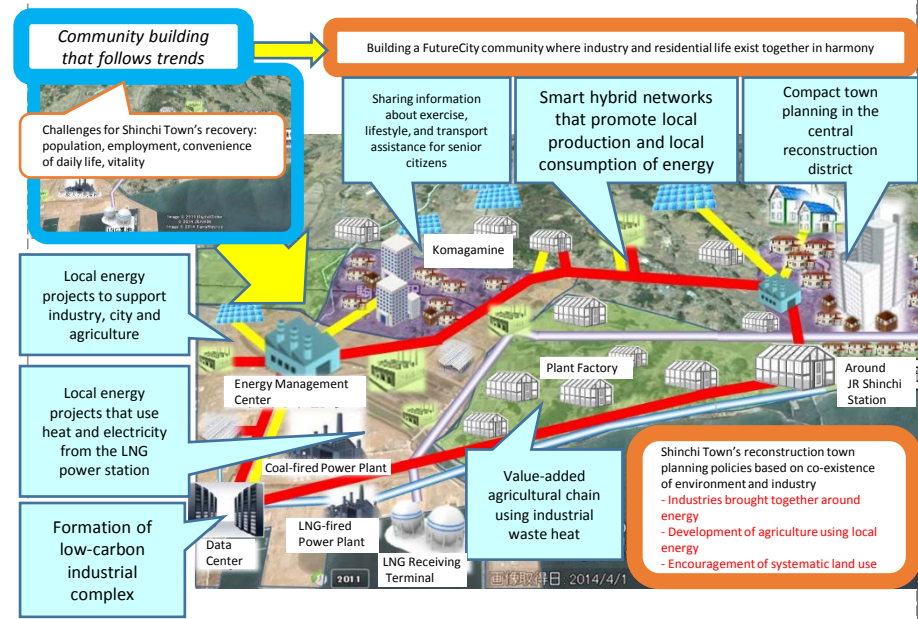
New Energy Promotion Division, Reconstruction Planning Department, Minamisoma City (Attn: Tonami)
Tel: 0244-24-5248 Fax: 0244-23-2511 E-mail: shinene@city.minamisoma.lg.jp

About Shinchi Town

- Population: Approx. 8,000
- Area: 46.53 km²
- Specialty products: garlic chives, figs, tomatoes, strawberries
- Main industries: agriculture; electricity, gas and heat supply; water



Shinchi Town's FutureCity Vision



Town Planning Around the Station and Local Energy Project

An urban zone reconstruction project is under way in an area of about 24 ha around JR Shinchi Station that was washed away by the tsunami of the Great East Japan Earthquake.

Also, with the growing potential for the use of natural gas in the area because of the Soma Port LNG Project, Shinchi Town is investigating local energy business opportunities together with town planning around the station, in order to realize co-existence between the environment and industry.

With the natural gas branching off from the pipeline to be installed on the east side of the station area, the aim is for commercialization of an autonomous and distributed local energy system using a co-generation system that supplies heat and electricity to nearby facilities, as well as a tri-generation system to supply CO₂ to agricultural production facilities.



Conceptual diagram of town planning and local energy project around Shinchi Station

Contact

Shinchi Town FutureCity Promotion Office (Planning and Promotion Division) (Attn: Kurosawa/Fuse)
Tel: 0244-62-2112 Fax: 0244-62-3194 E-mail: kanko@shinchi-town.jp