

About Niseko Town

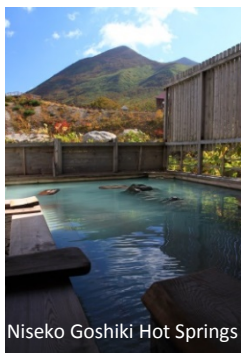
- Population: Approx. 4,900 (of which, 148 foreign nationals)
- Area: 197.13 km²
- Main industries: Tourism, agriculture
- Tourist numbers: 1.59 million (FY2014)



Local sake
"Kurabitoshu"



Sunflower fields and Mt. Yotei



Niseko Goshiki Hot Springs

The Action Plan's Three Priority Areas

Energy saving and use of renewable energy in tourist areas

Grass-roots initiatives in households

Energy turnaround



86% CO₂ reduction by FY 2050

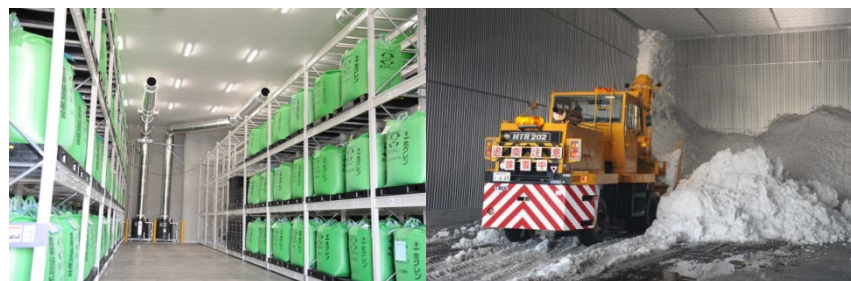
Building a low-carbon community with focus on the heating sector

In Niseko, room heating consumes a large amount of energy. We are actively introducing renewable energies in the heating sector. By taking maximum advantage of local resources, including geothermal-heat, hot spring heat and snow-ice cryogenic energy, the entire community, including government, residents, and businesses, will be able to achieve major reductions in greenhouse gases.



Niseko Community Center (extensive renovations in 2011)

- Improved insulation (exterior insulation / super-insulation plastic window sashes)
 - All lights are LED lightbulbs
 - Roof has sun-tracking solar power panels
 - Cooling and heating with geo-thermal heat pumps (cooling in main hall only)
- Heating: 19 x 10 kW pumps (6 for cooling), 31 x 80 m bore holes



JA Yotei snow- and ice-cooled rice storeroom (newly built in 2013)

- 2 storerooms (940 t capacity) for unpolished rice
- Snow storeroom capacity: 1,300 tons of snow



Niseko Kids Club after-school childcare facility (newly built in 2015)

- Larch wood from local forests used for construction materials
 - Wood-fiber insulation, wooden window frames
 - Geo-thermal heat pumps used for heating
- Heating: 2 x 10 kW; 3 x 100 m bore holes

Contact

Eco-Model City Promotion Office, Planning and Environment Department, Niseko Town Office (Attn: Ohno/Sakurai)
Tel: 0136-44-2121 Fax: 0136-44-3500 E-mail: kankyo-e@town.niseko.lg.jp