

About the Kesen County

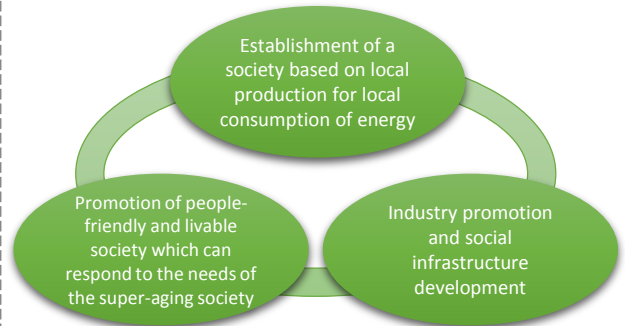
- Population: Approx. 64,000
- Area: Approx. 890 km²
- Features: Kesen County consists of three local governmental entities; coastal cities of Ofunato and Rikuzentakata, and forest rich town of Sumita. The three have always collaborated each other as a single county to sustain its society throughout the ages.



Left: Goishi Coast, Ofunato
Center top: Taneyamagahara, Sumita
Center bottom: Rokkando Cave, Sumita
TRight: Miracle Pine Tree, Rikuzentakata

The Kesen County's Vision

Kesen County Vision for the FutureCity



Building a Model for the Advanced Collaboration in Medical and Social Services

Kesen County FutureCity
Joint Coordination Committee for
Medical Services, Nursing Care,
Health and Social Welfare
(Established in August 2014)

First, the Joint Coordination Committee was established in order to discuss the possible improvements of coordination between medical and social services which were indispensable to respond the needs of the super-aging society. The members consisted of the stakeholders and experts from the various fields.

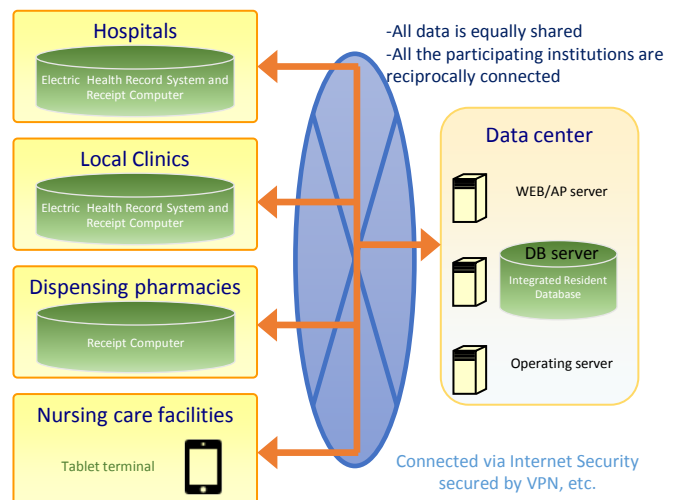
General Incorporated Association
Mirai Kanae Institution
(Established in April 2015)

The above JCC has been transformed to a general incorporated association 'Mirai Kanae Institution' ('Realize the future' in Japanese) in order to implement the outcomes of the discussions by strengthening its organizational capacity and improving its social trust.



Mirai Kanae Institution Project

- Introduction and Operation of a local information network system for medical and social services (called 'Mirai Kanae Net')
- Enhancement of nursing care services in the county
- Other projects related to the super-aging society



Conceptual diagram of Mirai Kanae Net, launched in April 2016

Contact

FutureCity Initiative Promotion Office, Policy Planning Department, Ofunato City Office (Attn: Niinuma/Sato)
Tel: 0192-27-3111 Fax:0192-26-4477 e-mail: kikaku@city.ofunato.iwate.jp