

## About Mitake Town

- Population: Approx. 19,000
- Area: 56.61 km<sup>2</sup> (60% forest)
- Attraction: A town rich in nature that flourished as a post town on the Nakasendo Trail



▲ Scenic beauty spot: Giant boulders of Oniwa Park



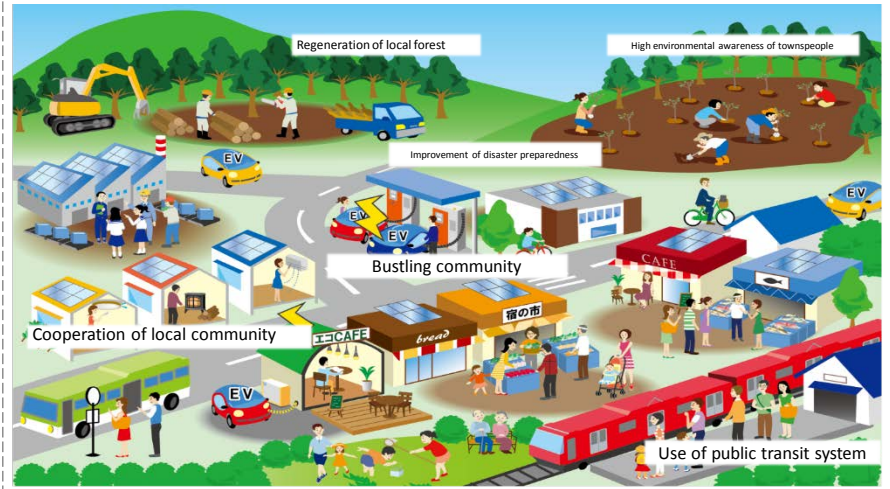
▲ Bamboo lilies in bloom



▲ Mitake Hanazushi, a new hometown cuisine

## Low-Carbon Community Mitake

Eco-Model City Vision for Creating Mitake, a Low-Carbon Community Leveraging Local Resources



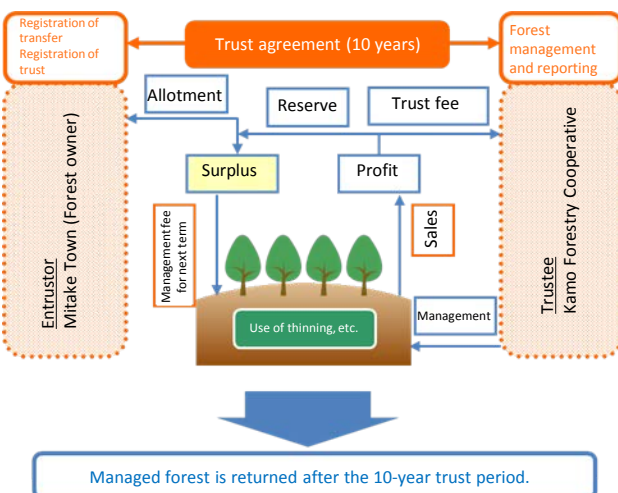
## Involving the townspeople in building a low-carbon community



To achieve Mitake Town's Eco-Model City vision, the towns' residents, businesses and government are coordinating and cooperating to deploy the various strategies.



▲ Forest development by the entrusted operator ▲



## Contact

Eco-Model City Promotion Office, General Affairs Department, Mitake Town Office, Kani District, Gifu Prefecture (Attn: Hayakawa)  
Tel: 0574-67-2111 Fax: 0574-67-1999 E-mail: eco@town.mitake.lg.jp