

## Overview of the city

- Population: 422,784 (as of Sep. 1, 2015)
- Area: 918.32 km<sup>2</sup>
- Land use: 68% forest, 8% agricultural land, 7% residential land
- Main industries: Automotive, agriculture

## Vision



### Traffic

- Construction of human- and environmentally-friendly public transportation system, etc.



### Hybrid

CO<sub>2</sub> reduction target  
30% by 2030  
50% by 2050

### Forest

- Maximization of CO<sub>2</sub> absorption amount by strengthened thinning, etc.



### Industry

- Promotion of transition to sustainable plants, etc.

### Residential

- Promotion of smart housing, etc.

### Urban Center

- Upgrading low-carbon society model districts, etc.

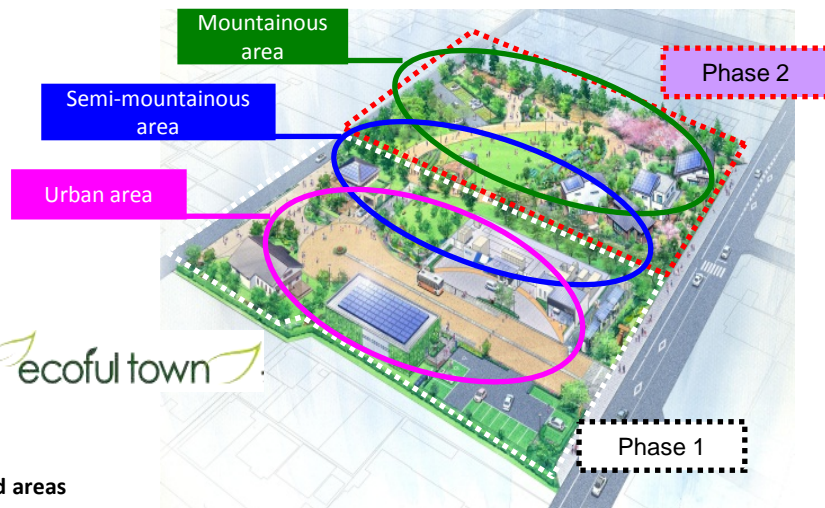


## Roles of government, citizens, corporations and other organizations

### Roles and responsibilities

Corporations and organizations: Development of advanced eco-technology  
Government: Communication and development/familiarization support  
Citizens: Promotion of eco-activities

Toyota Ecoful Town has been developed to exhibit Toyota City's low-carbon efforts in cooperation with the private sector. It reproduces the city's regional characteristics on a small scale. Through the experience of the latest eco-technologies, it aims for lateral expansion of eco-activities. The facility has been visited by about 150,000 people from 80 countries worldwide.



### Planned areas

Phase 1 area: approx. 0.7 ha (Opened in May 2012)

Total area: approx. 1.55 ha (Completed in April 2014)

Symbolic facility of City's activity

## Overview of characteristic efforts

### Development of low-carbon transportation system

Leveraging its characteristics as a city of automobiles, the ultra-compact EV-sharing system, "Ha:mo," that supplements daily movement paths between public transportation systems, such as rail and bus, and destinations, has been introduced in the city at the initiative of Toyota Motor. As of September 2015, there are 40 rental stations within the city.



Since October 2014, a demonstration experiment anticipating global deployment has been run in Grenoble, France



### International conference cohosted by the United Nations and Toyota City

The High-Level Symposium on Sustainable Cities: Connecting People, Environment and Technology was co-convened by the U.N. and Toyota City from January 15 to 16, 2015.



Lively discussions were made on issues such as the environment, aging and disaster preparedness.



During the "Toyota International Environment Week," from January 10 to 18, various events that promote people's understanding of the environment were held.



### Promoting local production for local consumption of renewable energy with tax reduction and various subsidy programs.

#### Toyota City Eco-tax reduction

- (1) Smart house tax reduction (first in Japan)  
Partial exemption of property tax, etc.
- (2) Renewable energy plant tax reduction (first in Japan)  
Partial exemption of property tax for power plants with an output of 10 to 2,000 kW
- (3) Electric light vehicle tax reduction (first in Aichi)  
Full tax exemption for the light EV and ultra-compact EV

#### Toyota City Eco-Family Subsidy

- (1) Solar power system
- (2) Fuel cell system
- (3) Next-generation vehicle (including charging facility and external power supply system)
- (4) Home Energy Management System (HEMS)
- (5) Li-ion battery system for home use



#### Granting Eco-Point

Points are granted for using the Oiden bus (community bus), visiting eco-facilities (Ecoful Town, etc.), and participating in urban-rural exchange events, etc.

#### Exchanging Eco-Point

Amassed points can be exchanged for a variety of goods, such as eco-products (waste bags, Oiden bus tickets), gift certificates, and Toyota's specialties, and for participation in rural experience and exchange activities.



PET bottle recycling



Eco Family Card

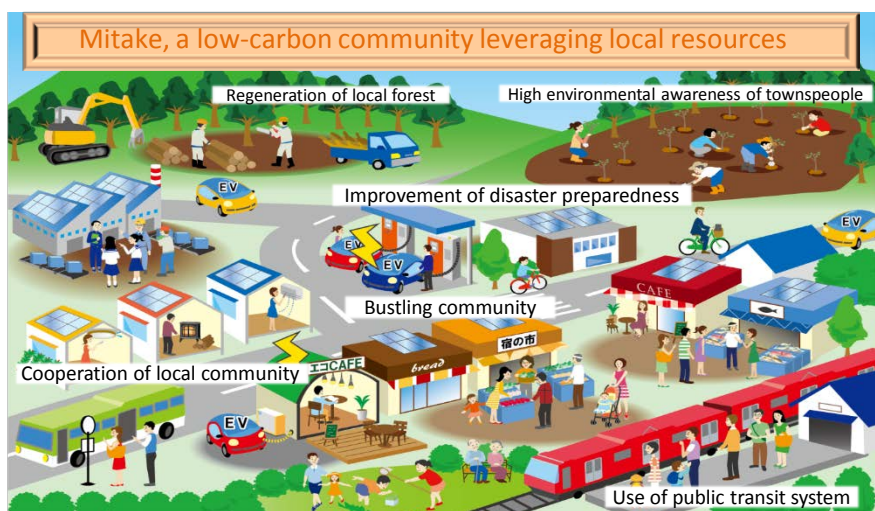
## Contact

Eco-Model City Promotion Division, Planning and Policies Department, Toyota City  
Tel.: 0565-34-6982 Fax: 0565-34-6993 E-mail: hybrid-city@city.toyota.aichi.jp

## Overview of the city

- Population: 18,825 (as of Aug. 1 2015)
- Area: 56.61 km<sup>2</sup>
- Land use: Approximately 60% forest
- Main industries: With the improved access owing to the newly constructed loop road, establishment of corporations (mainly manufacturing) is increasing.

## Vision



## Roles of government, citizens, corporations and other organizations



▲ Forest development by corporation



▲ Use of public transit system



▲ Use of renewable energy



▼ Making green curtains



▼ Environmental education



To realize our vision of Eco-Model City, we promote use of

public transit, energy-saving activities at home, reduction of waste, etc. through coordination and collaboration among townspeople, corporations and government.

## Overview of characteristic efforts

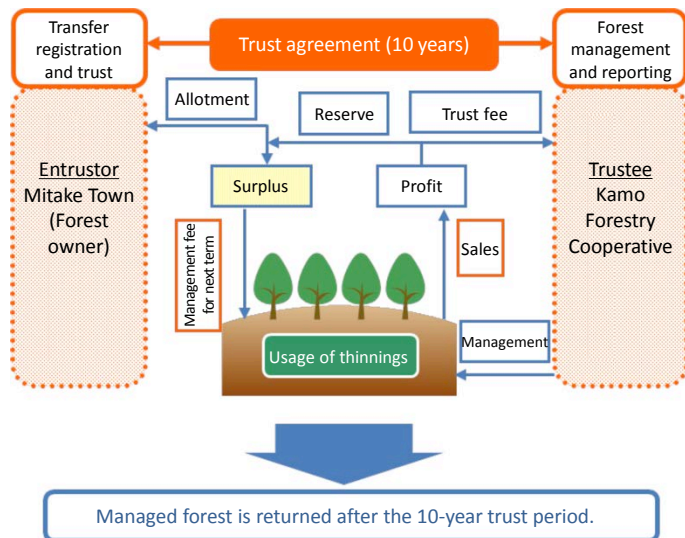
▼ Forest area that shares 60% of the total town area



▼ Forest development by the entrusted operator



▼ Site of forestry experience in cooperation with Shimokawa Town



### Promotion of sustainable forest management model (Entrusted forest management)

Mitake Town is blessed with a forest that shares about 60% of the town area. To utilize the forestry know-how of the private sector, and to achieve proper management and effective use of the town's forest, we have adopted the entrusted forest management method that requires no public expense. Establishment of a sustainable forest management model is helping to reduce CO<sub>2</sub> emissions, create new jobs, and cultivate human resources through collaboration with the town's forest volunteers.

## Contact

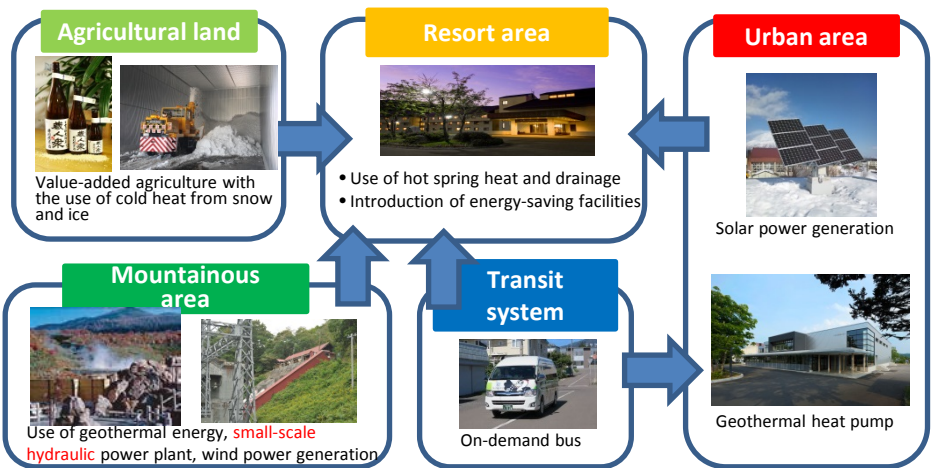
Attn: Hayakawa, Deputy Office Manager, Eco-Model City Promotion Office, General Affairs Department, Mitake Town Office, Kani District, Gifu Prefecture Tel.: 0574-67-2111 Fax: 0574-67-1999 E-mail: eco@town.mitake.lg.jp

## Overview of the city

- Population: 4,886 (as of the end of Jun. 2015)
- Area: 197.13 km<sup>2</sup>
- Land use: 46.8% forest, 20.2% wilderness, 14.4% agricultural land, 1.2% residential land
- Main industries: Tourism, agriculture

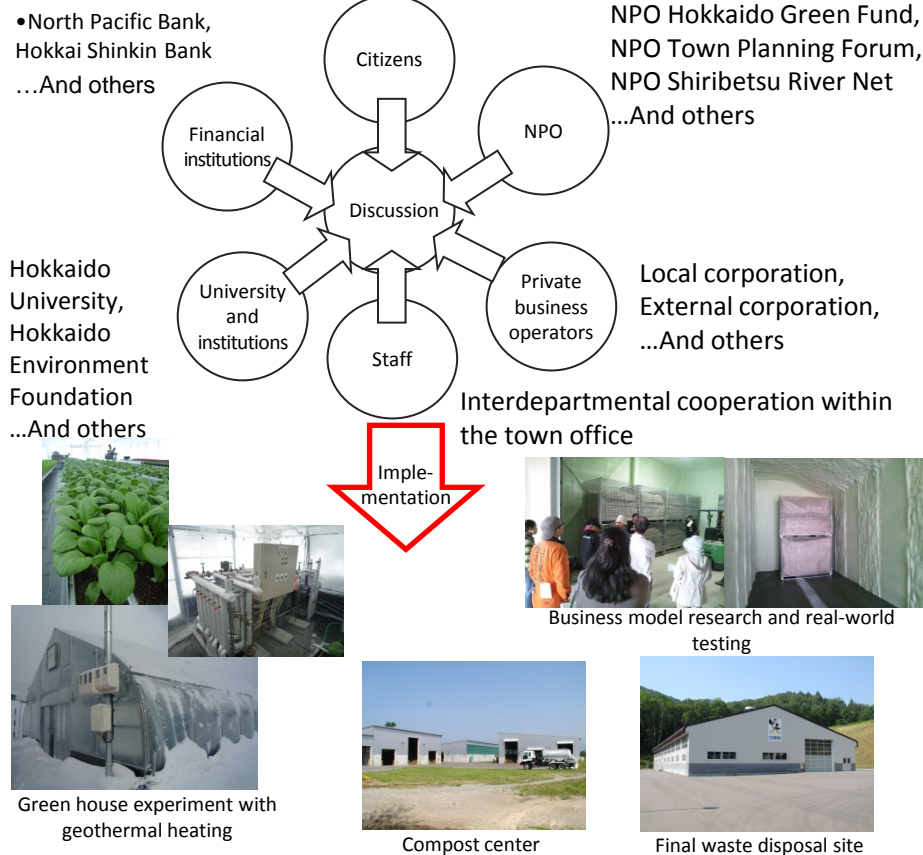
## Vision

### International eco-resort city Niseko

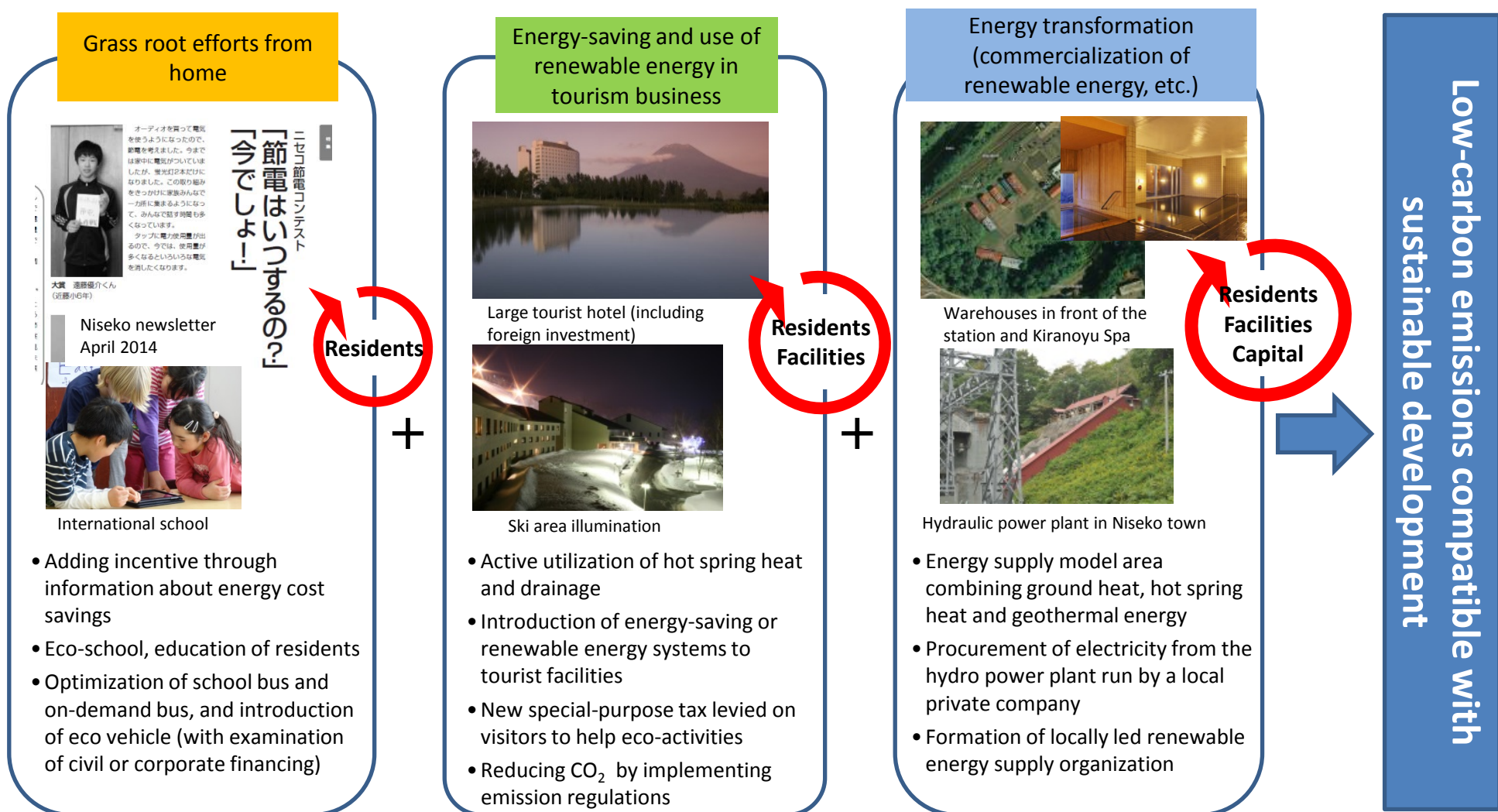


## Roles of government, citizens, corporations and other organizations

### The concept behind the promotion system and business promotion strategy



## Overview of characteristic efforts



## Contact

Eco-Model City Promotion Officer, Planning and Environment Department, Niseko Town Office  
47 Fujimi, Niseko-cho, Abuta-gun, Hokkaido 048-1595  
Tel.: 0136-44-2121 Fax: 0136-44-3500 E-mail: [kankyo-e@town.niseko.lg.jp](mailto:kankyo-e@town.niseko.lg.jp)

## Overview of the city

- Population: 7,632 (as of May 1, 2015)
- Area: 137 m<sup>2</sup>
- Land use: 78% forest
- Main industries: Agriculture, forestry, tourism

## Vision

Local development leveraging abundant **geothermal** and **forests**



Low-carbon project

Local development

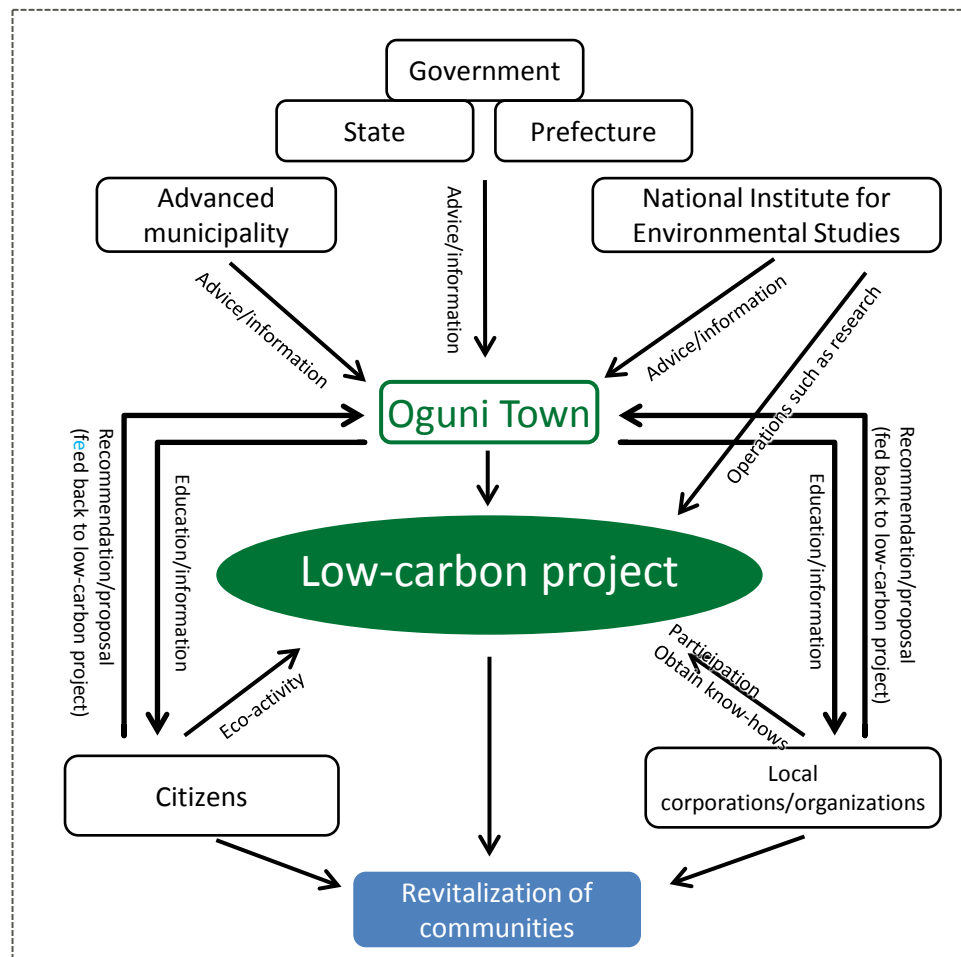
Agriculture

Forestry

Tourism

(Agriculture and forestry town plan leveraging geothermal and biomass)

## Roles of government, citizens, corporations and other organizations



## Overview of characteristic efforts



### Geothermal lumber drying facility

This facility uses **geothermal** upwelling from the ground to dry lumber. Currently 14 lumber driers have been constructed. This **ecological** method, requiring no fossil fuel, allows timber to dry slowly compared to other methods, thus putting less burden on the timber and achieving a true color and luster.

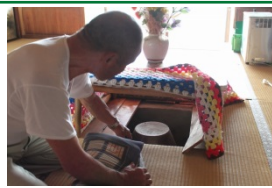
### Traditional geothermal drying cabin



← Applying this method ...



Geothermal hot-water supply



Geothermal kotatsu, a leg warmer



Geothermal heater

In Waiza Area, Oguni Town, people have traditionally made use of **geothermal** for various purposes such as **cooking**, **heating** and **hot-water supply**, and it has become rooted in their local life. This **geothermal drying cabin** is used for drying washed clothes and, at the same time, for drying crops.

## Contact

Daisuke Hasebe, Assistant Section Chief, Policy Division, Oguni Town Office  
Tel.: 0967-46-2118 Fax: 0967-46-2368 E-mail: kankyo@town.kumamoto-oguni.lg.jp